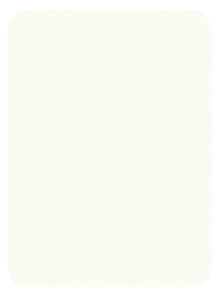




**EUROPA™ LAMINATES**

**FORMICA® EUROPA™** laminates offer classic looks for international interior style. While ideal for benchtops in kitchens, bathrooms and laundries, this practical range can also be used for vertical applications. Designs include a wide variety of realistic stone patterns, new solid colours and woodgrain prints. Colours have been specifically chosen together with a range of relevant and popular surface finishes to enhance overall appearance and appeal. The range boasts AR+® finish with a superior gloss level and scuff resistance. Formica Europa is also backed by a 7 year limited warranty. So now you can easily achieve contemporary European looks with Formica.

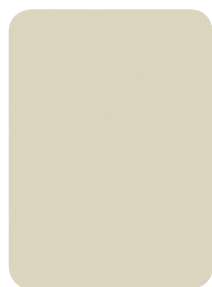
## COLOURS



Crystal White



Porcelana



Pumicestone



Storm



Graphite



New Burgundy



Tropical Blue



Chrome Yellow



Carnaval

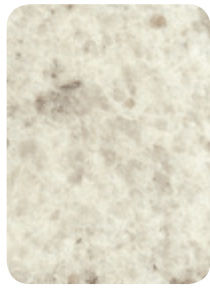




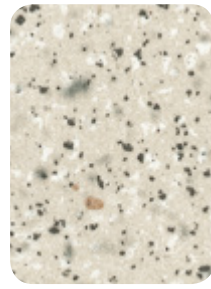
Ice Quarstone  
AR<sup>+</sup> R



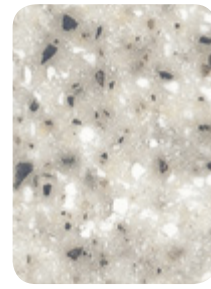
White Quartz  
AR<sup>+</sup> E



White Kashmir  
AR<sup>+</sup> E



Coran  
C



Millstar Cream  
AR<sup>+</sup> SM



Bernini  
AR<sup>+</sup>



Cream Artstone  
AR<sup>+</sup>



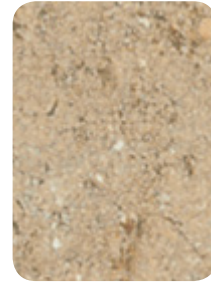
Venetian Gold Granite  
R



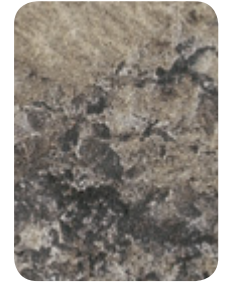
Italico Crema  
AR<sup>+</sup>



Amber Artstone  
AR<sup>+</sup>



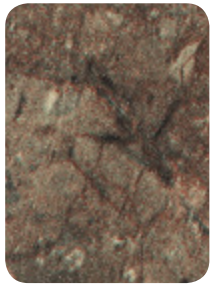
Travertine  
AR<sup>+</sup> E



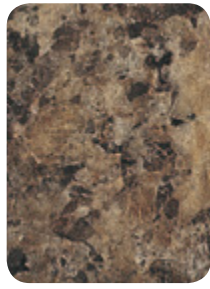
Perlato Granite  
AR<sup>+</sup> E



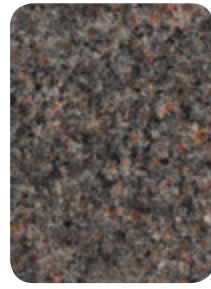
Butterum Granite  
AR<sup>+</sup> E



Cocoa Marble  
AR<sup>+</sup> E



Jamocho Granite  
AR<sup>+</sup> E



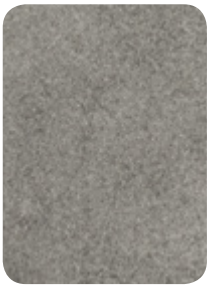
Tourmalet  
AR<sup>+</sup> C



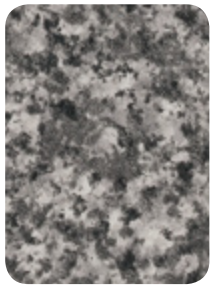
Burnt Strand  
V



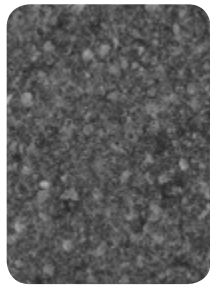
Ebony Wood  
N



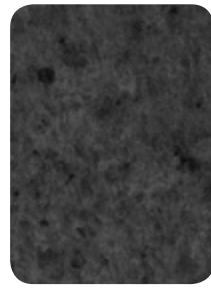
Cosmopolitan Concrete  
R



Inari Granite  
AR<sup>+</sup> C



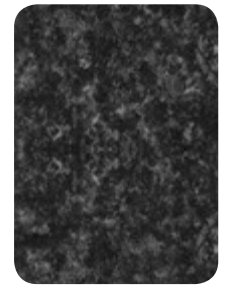
Smoke Quarstone  
R



Grey Kashmir  
AR<sup>+</sup> E



Basalt Slate  
E H



Bulnes  
AR<sup>+</sup> C

AR<sup>+</sup> = AR+ High Gloss

C = Crystal

E = Etchings

H = Honed

N = Naturelle

R = Riverwash

SM = Seda Matt

V = Velour



**INFORMATION** Visit [formica.com.au](http://formica.com.au) for colour and design tips, technical information, care, maintenance and more.

**ENQUIRIES** Call 132 136.

**SAMPLES** Visit [formica.com.au](http://formica.com.au) or call 1800 002 204.

**WARRANTY** 7 year limited warranty.



For more inspiration join us on [facebook.com/thelaminexgroupau](https://facebook.com/thelaminexgroupau)

Formica stockist

## formica.com.au

Formica Europa laminates are marketed and distributed by Laminex Group Pty Limited ABN 98 004 093 092, trading as Laminex. In some cases, Laminex uses computer generated imagery (CGI) to provide graphical representations of our products where actual photos are not available. The colours and finishes of the products featured within all Laminex imagery are as close to the Laminex range as CGI, photographic lighting and our printing processes allow. Different camera angles, although not designed to be misleading, can sometimes distort actual size and distances. Formica Europa laminates are no different than any other material in that darker colours will always show scratches and superficial wear and tear more readily than lighter colours. Formica Europa laminates should be protected from strong, direct sunlight as continuous exposure may cause discolouration or fading to the surface. Please obtain a copy of the terms and conditions of Formica Europa laminates 7 year limited warranty from [formica.com.au](http://formica.com.au). This warranty is in addition to any rights that may exist under the Australian Consumer Law. **Formica<sup>®</sup> Europa<sup>™</sup> AR+<sup>®</sup>**