

The logo for Excelair, featuring the word "Excelair" in a bold, red, sans-serif font. A red swoosh underline starts above the 'E' and curves over the 'l' and 'a'.A close-up, low-angle shot of a modern outdoor heater. The heater has a brushed metal finish and a ribbed front panel. The lighting is dramatic, highlighting the metallic textures and sharp lines of the design.

**OUTDOOR
HEATERS**



Excelair



OUTDOOR HEATER
ZERO LIGHT SERIES
WALL MOUNTED
EOHA24R

Waterproof

IP65

For outdoor or indoor

Corrosion-resistant
anodized

Aluminium

Alloy casing

2.4kW

Power usage

Aluminium alloy
heating plate with

Ceramic

Infrared coating

Remote Control with

13hour

Shut off timer

#304

Stainless Steel

Angle adjustable
ceiling bracket

Thermal insulation
layer

Ceramic Fiber

to reduce heat loss

1505 x 177
x 100mm

Product dimensions





Excelair



OUTDOOR HEATER

CERAMIC GLASS SERIES

WALL MOUNTED

EOHA22GR

Waterproof

IP65

For outdoor or indoor

2.2kW

Power usage

Remote Control with

3hour

Shut off timer

#304

Stainless Steel

Angle adjustable
Bracket

Nextrema glass
ceramics

SCHOTT

Engineered in Germany



Corrosion-resistant

anodized
Aluminium

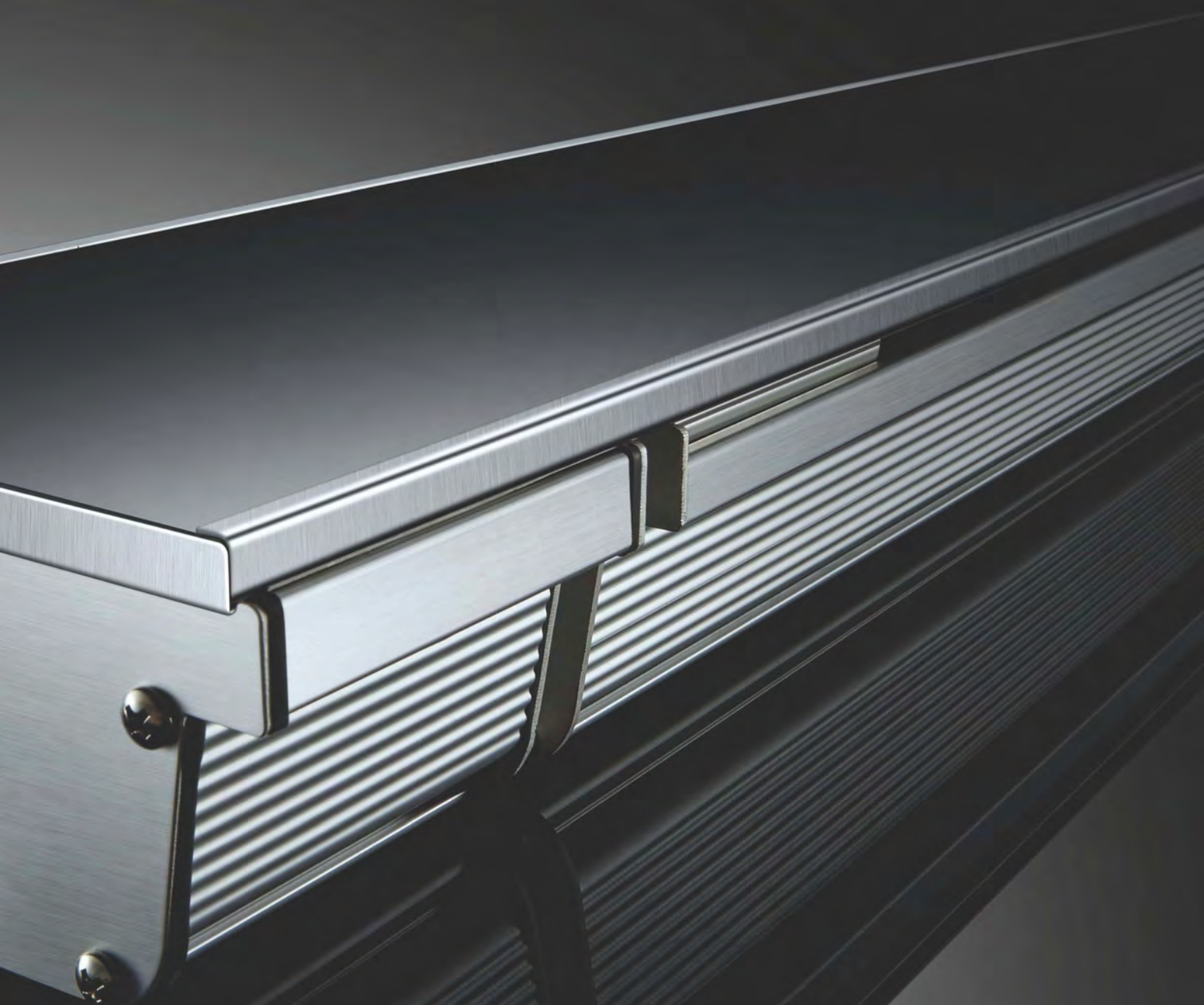
Alloy casing

**900 x 170
x 80mm**

Product dimensions

The logo for Excelair, featuring the word "Excelair" in a bold, red, sans-serif font. A red swoosh underline starts under the 'E', arches over the 'x', and ends under the 'r'.

Excelair



GBI SALES PTY LTD

78 Mallard Way Cannington Western Australia 6107

P | 08 9478 0466 E | info@gbi.com.au W | www.gbi.com.au